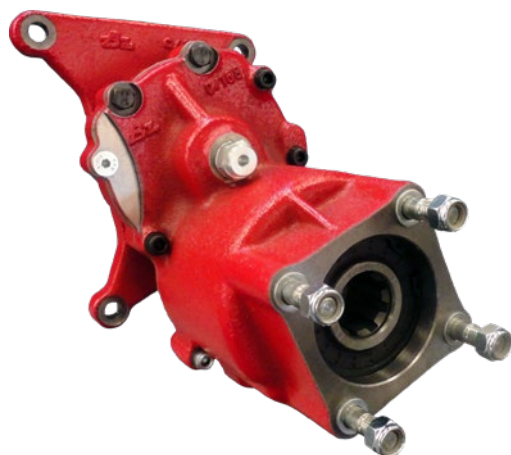


AS-TRONIC - 12 AS 1800 / 16 AS 2200 / 12 AS 2301 / 16 AS 2601
5 Tal. Altas Prestaciones / 5 Bolt. high Perf

Frontal - Neumático con ó sin Intarder

Rear - Pneumatic with or without Intarder



Descripción Description

Toma de fuerza de alta potencia con embrague incorporado, montaje en registro frontal de 5 taladros de la caja de cambios. Accionamiento neumático. Válida para cajas de cambios con y sin intarder.

High Power, built-in clutch PTO, mounting on 5 bolts flange of the gearbox. Pneumatic shifting. Valid for gearboxes with and without intarder.

Datos Principales Main Data

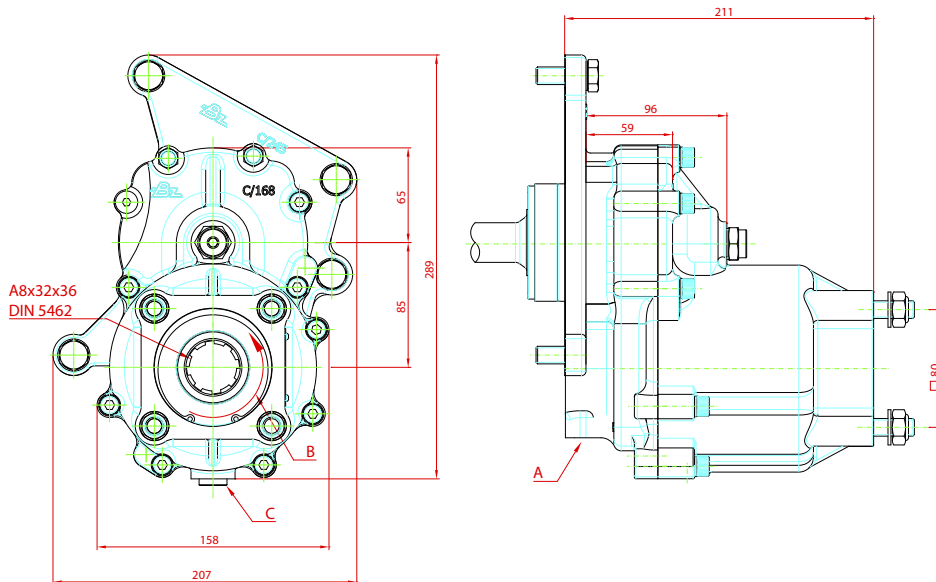
| | | |
|---|---------------------------|-------------------|
| Par nominal Torque (Nm) | Continuo Continuous | 400 |
| | Intermitente Intermittent | 560 |
| Potencia (1000 r.p.m.) Power (HP) 1000 r.p.m | | 57 CV // 42 kW |
| Lado de montaje Mounting position | | Posterior Rear |
| Sentido de giro de la bomba Pump rotation | | Derecho ClockWise |
| Peso Weight (Kg) | | 23 |
| Relación Motor - Toma de Fuerza Engine to PTO ratio | | ANEXO ATTACHMENT |

Códigos y Combinaciones Part Numbers and Combinations

| Relación Interna Internal Ratio | Tipos de salida Output types | |
|---------------------------------|------------------------------|-----------------------|
| | Plato Flange | Bomba Pump (DIN 5462) |
| 1:1.35 | 1027402 | 1027403 |
| 1:1.85 | 1030802 | 1030803 |

AS-TRONIC - 12 AS 1800 / 16 AS 2200 / 12 AS 2301 / 16 AS 2601
5 Tal. Altas Prestaciones / 5 Bolt. high Perf

Frontal - Neumático con ó sin Intarder
Rear - Pneumatic with or without Intarder



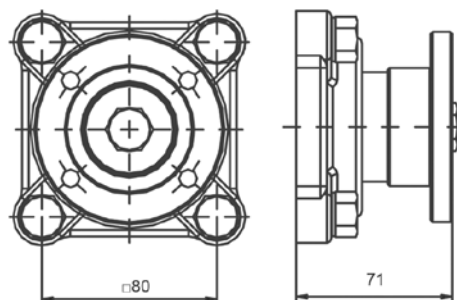
Notas Notes

| A | Toma de aire, rosca 1/4" GAS | A | Air connection, thread 1/4" BSP |
|---|------------------------------|---|---------------------------------|
| B | Sentido de giro | B | Rotation |
| C | Tapón de drenaje del aceite | C | Oil drain plug |

Importante: Una bomba superior a 16 kg. necesita ser instalada sobre soportes
Warning: A pump with a weight over 16 kg. need to be supported by brackets.

Tipos de Salida Output Types

Plato / Flange



SAE: 1100
1300
1400

DIN: 90
100

AS-TRONIC - 12 AS 1800 / 16 AS 2200 / 12 AS 2301 / 16 AS 2601
 - 5 Tal. Altas Prestaciones / 5 Bolt. high Perf

Frontal - Neumático con ó sin Intarder
 Rear - Pneumatic with or without Intarder

Anexo Attachment

| Relación Interna Internal Ratio | | | 1:1,35 | 1:1,85 |
|---|---|-------------|---------|---------|
| Relación motor - Toma de Fuerza Engine to PTO ratio | 12AS-2330 TD / 12AS-1630 TD / 1930 TD/ 2130 TD/ 2140 TD / 2340 TD/ 2430 TD/ 2540 TD | /15.86-1.0 | 1: 1,11 | 1:1,52 |
| | 12AS-2331 TD / 12AS-1631 TD/ 1931 TD/ 2131 TD/ 2141 TD / 2301 TD/ 2341 TD/ 2431 TD (+IT) | | | |
| | 12AS-1800 | /14.89-1.0 | 1: 1,02 | 1:1,4 |
| | 12AS-1800 (+IT) | | | |
| | 12AS-1930 TO/2130 TO/2330 TO / 2530 TO | /12.33-0.78 | 1: 1,82 | 1: 2,49 |
| | 12AS-1931 TO/2131 TO/2301 TO 2331 TO/ 2531 TO (+IT) | | | |
| | 12AS-2540 TO/ 2740 TO/ 2940 TO | /12.29-0.78 | 1: 1,82 | 1:2,49 |
| | 12AS-2541 TO/ 2741 TO/ 2941 TO (+IT) | | | |
| | 16AS-2200 | /15.89-1.0 | 1: 0,96 | 1:1,32 |
| | 16AS-2200 (+IT) | | | |
| | 16AS-2230 TD/ 2601 TD | /17.03-1.0 | 1: 1,02 | 1:1,4 |
| | 16AS-2231 TD/ 2601 TD (+IT) | | | |
| | 16AS-2601 TO/ 2630 TO | /14.12-0.83 | 1: 1,50 | 1:2,06 |
| | 16AS-2601 TO/ 2631 TO (+IT) | | | |